

REVISIONS		
REV. NO.	DESCRIPTION	DATE

**INDEX OF SHEETS**

SHEET NO.	TITLE
AB01-AB02	GENERAL NOTES AND SUMMARY OF PAY QUANTITIES (BRIDGE)
B001-B002	GENERAL PLAN AND ELEVATION
B003-B005	FOUNDATION REPORT
B006	SUBSTRUCTURE STAKING DIAGRAM
B007	SUBSTRUCTURE EXCAVATION AND PIPE UNDERDRAIN ASSEMBLY DETAILS
B008-B011	DETAILS OF ABUTMENT NO. 1
B012-B015	DETAILS OF ABUTMENT NO. 2
B016-B017	DETAILS OF PIERS
B018-B024	DETAILS OF SUPERSTRUCTURE
B025	DETAILS OF TYPE IV P.C. BEAMS (85' SPAN)
B026	DETAILS OF TYPE IV P.C. BEAMS (100' SPAN)
B027	DETAILS OF TYPE IV P.C. BEAMS
B028	DETAILS OF BEARING ASSEMBLIES
B029	DETAILS OF APPROACH SLABS
B030	DETAILS OF DRAINS AT ENDS OF BRIDGE

**STANDARDS**

- TR4-2-00E
- EJ-SK-03E
- EJ-DTL-01E
- HP1-2-00E
- LECS-4-1
- SPI-4-1
- PUD-3-2

**UTILITIES**

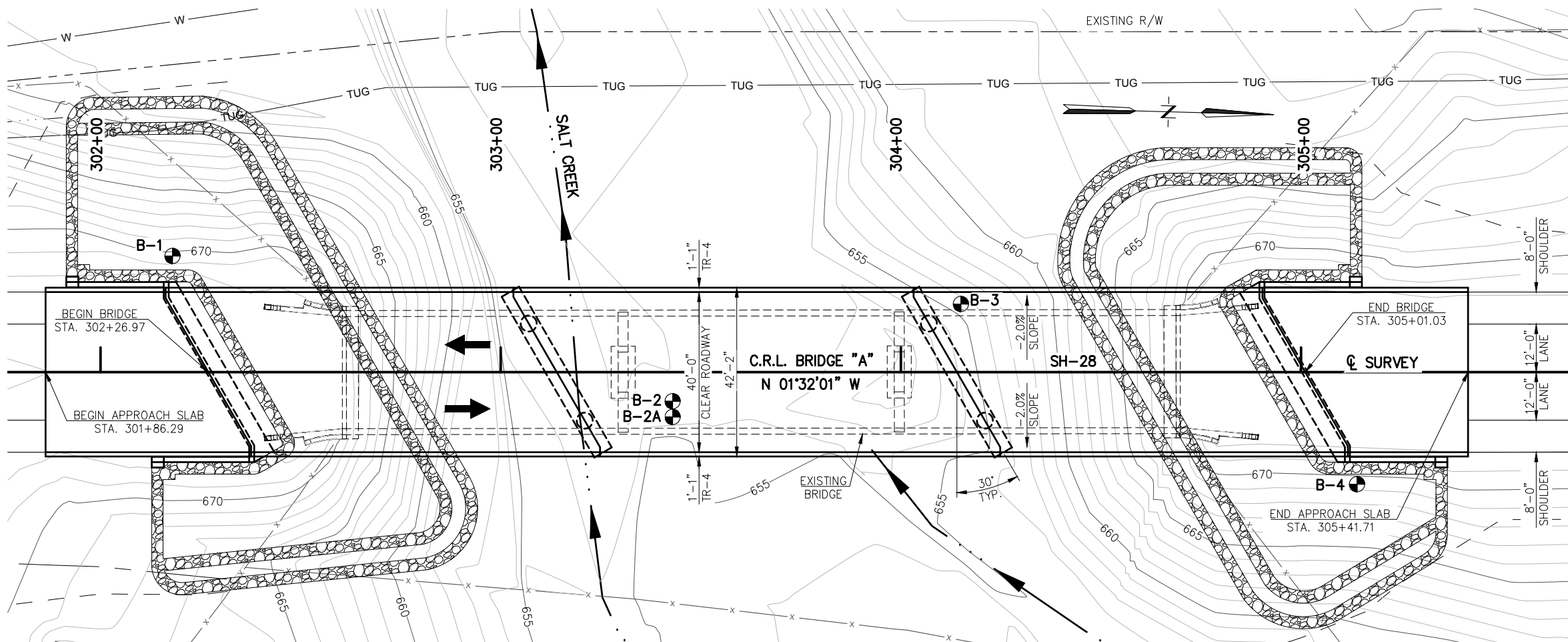
- AEP-PSO DISTRIBUTION, TULSA, OK
- AT&T, TULSA, OK
- ELM BEND WATER DISTRICT INC., OCHELATA, OK

**HYDRAULIC DATA**

TOTAL D.A. = 26.81 SQ. MI.  
 CONTROLLED D.A. = 0.00 SQ. MI.  
 EFFECTIVE D.A. = 26.81 SQ. MI.

Q2 = 1,940 CFS	Q50 = 10,200 CFS
V2 = 4.47 FPS	V50 = 9.47 FPS
CHW2 = 659.23 FT	CHW50 = 664.51 FT
Q5 = 3,730 CFS	Q100 = 12,300 CFS
V5 = 5.98 FPS	V100 = 10.30 FPS
CHW5 = 660.72 FT	CHW100 = 665.43 FT
Q10 = 5,390 CFS	PIER SCOUR DEPTH = 10.14 FT (1)
V10 = 7.07 FPS	CONTRACTION SCOUR DEPTH = 8.72 FT (1)
CHW10 = 661.92 FT	TOTAL SCOUR DEPTH = 18.86 FT (1)
Q25 = 8,120 CFS	QOT > Q500 = 18,500 CFS
V25 = 8.56 FPS	V500 = 12.35 FPS
CHW25 = 663.50 FT	CHW500 = 667.75 FT
	PIER SCOUR DEPTH = 11.04 FT (1)
	CONTRACTION SCOUR DEPTH = 12.01 FT (1)
	TOTAL SCOUR DEPTH = 23.05 FT (1)

(1) NOT APPLICABLE DUE TO ROCK ELEVATIONS.



**PLAN**

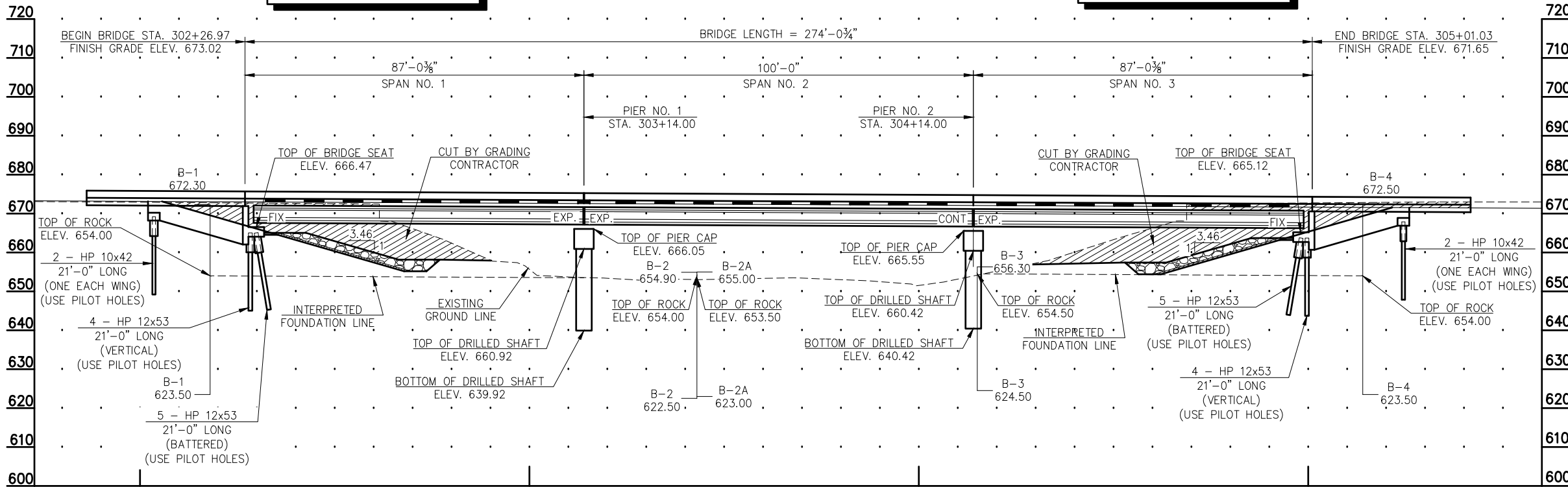
SEE "FOUNDATION REPORT" SHEETS FOR BORING DATA.

BM 6  
60D IN HACKBERRY,  
STA. 301+51.04, 65.10' LT.  
ELEV. 666.28

NOTE: ALL STATIONING ALONG CONSTRUCTION REFERENCE LINE

BM 7  
80D IN 24" LOCUST,  
STA. 306+10.00, 125.89' RT.  
ELEV. 662.86

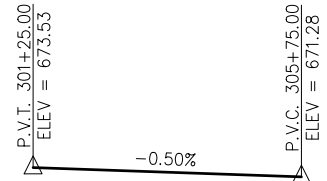
SEE "DETAILS OF DRAINS AT ENDS OF BRIDGE" SHEET FOR DRAIN DATA.



**ELEVATION**

NOTE: ALL STATIONING AND ELEVATIONS ALONG CONSTRUCTION REFERENCE LINE

**GRADE DATA**



DESIGN	MBS	4/14	SH-28 OVER SALT CREEK	NOWATA COUNTY
DETAIL	SLP	4/14	BRIDGE "A"	
CHECK	MBS	3/15	<b>GENERAL PLAN AND ELEVATION</b>	
			<b>(SHEET NO. 1 OF 2)</b>	
GUY ENGINEERING SERVICES, INC.			CONST. 85'-100'-85' TYPE IV P.C. BEAM SPANS x 40' CLR. RDWY. W/ CONC. TRAFFIC RAIL (TR4), SKEW 30° RF, C/S STA. 303+64.00 STATE JOB PIECE NO. 28857(04) SHEET NO. B001	

Monday, July 31, 2017 4:11:09 PM V:\12-716E SH-28 Salt Creek JP 28857\STRUCTURAL\DWG\Salt Creek - GPE.dwg